

# Clapham Bottoms Survey



**Arthur Batty**  
**February 2011**

Front cover: Longhouse on site 1 looking south.  
Site 3 is in the centre at top of photograph.  
*Photograph A Batty*

Clapham Bottoms Survey © 2011  
Published by Batty & Batty

## Acknowledgements

Dr J Farrer for permission to carry out the surveying.

Mr J Price for web publishing.

Mr M Simpson for his knowledge of GIS software.

Mrs A M Batty for editing and publishing.

# Clapham Bottoms

This publication discusses the features recorded in a complete survey of Clapham Bottoms, and should be read in conjunction with our previous publication. (Batty, 2010). All measurements used have been taken from the centre of the visible wall remains. We have also used the abbreviation SR for structural remains in the text.

Fig 1 Shows a complete survey of Clapham Bottoms this can also be viewed on the following website link <http://ingleborougharchaeology.org.uk/>.

This opens in Adobe Reader and by selecting the layers button each layers can be viewed individually and can also be enlarged by clicking the + button

## CBT Site 1 Fig 2

At this location there is a Longhouse measuring 17m x 6.25m. Adjacent to the western side there is a rectangular structure measuring 9m x 4.25m. The larger structure has a cross wall at the southern end creating a small room, and at the northern end there is a circular feature, on the western side of the doorway. The smaller structure has no internal features and from the foundation remains has been considerably less substantial and may not have had a roof. Both of these have small enclosures abutting them and to the SE of the longhouse there are the remains of what we believe to be a robbed cairn, that appears to have had a small structure built within its remains. If these remains were a cairn, they probably date from a much earlier period and have probably been used to build the two structures described above. Immediately to the south there is a limestone scar below which are several small enclosures – possibly used for handling stock. All the above are set within an outer enclosure of approximately 11 acres with some smaller enclosures situated at the SE corner.

## CBT Site 2 Fig 3

On this site there are the SR of 2 Longhouse type structures, the southern one has a small pile of stones set within it, whether this feature is contemporary with the SR is unknown. On the SE corner there is a circular feature built into the main structure wall. This feature is not identical to the one in the longhouse on Site 1, but may represent a structure with a similar purpose. Adjacent to the SE corner of this structure are SR 7.6m x 4.8m these are considerable less substantial than the main structure. The adjacent SR on the northern side do not appear to have any internal features, the wall remains are equally as substantial as the

southern building. These all have small enclosures abutting them and are set within an outer enclosure of approximately 11 acres.

#### CBT 3 Site 3 Fig 4

This site has the SR of a longhouse 14m x 5m with a cross wall 3m from the eastern end creating a small room. The remains are very similar to those on Sites 1 and 2, and there is also a small enclosure abutting its southern side. To the north there are SR measuring 6m x 4m, and to the north again there are SR measuring 4.5m x 4m. These are all situated on the western side of a larger enclosure of approximately 5 acres. There are also some small enclosures on the southern side of the outer enclosure, we do not know if this site is contemporary with Sites 1 and 2, but we think it is very likely to be.

#### CBT Site 4 Fig 5

Here there are the SR of a longhouse 16.7 x 5.5m with a cross wall creating 2 rooms of approximately the same size. On the western side there are SR measuring 8.5m x 4m, both of these are equally substantial and similar to Sites 1, 2 and 3. To the NE there are SR measuring 4.5m x 4.3m, abutting all these are small enclosures. To the north of this complex are two separate small enclosures that appear to be standing in isolation. We have been unable to establish if there is an outer enclosure to this site, however there are linear wall remains going from the SR in a SE direction (See Fig1 ). These remains are considerably more linear than those associated with Sites 1, 2 and 3. There is the possibility that these wall remains are not contemporary with the SR, and that the outer enclosure for this site may have been situated to the NW, taking in the two smaller enclosures previously described.

#### CBT Site 5 Fig 6

This site is completely different to those described above. Here there are SR roughly circular measuring 6.6m N/S x 6.8 E/W and this is set within an outer enclosure of approximately 1,633 sq metres. On the southern side of this enclosure are SR measuring 5.8m x 3.7m with no discernable interior features. To the NW of these, below a limestone outcrop, are SR measuring 3.1m x 2.5m and remains of a small enclosure. We do not think this site has any relationship with Sites 1,2,3 and 4 and may represent an earlier period.

As can be seen in Fig 1 there are several other SR - namely cairns and small isolated enclosure remains that are built abutting limestone scars.

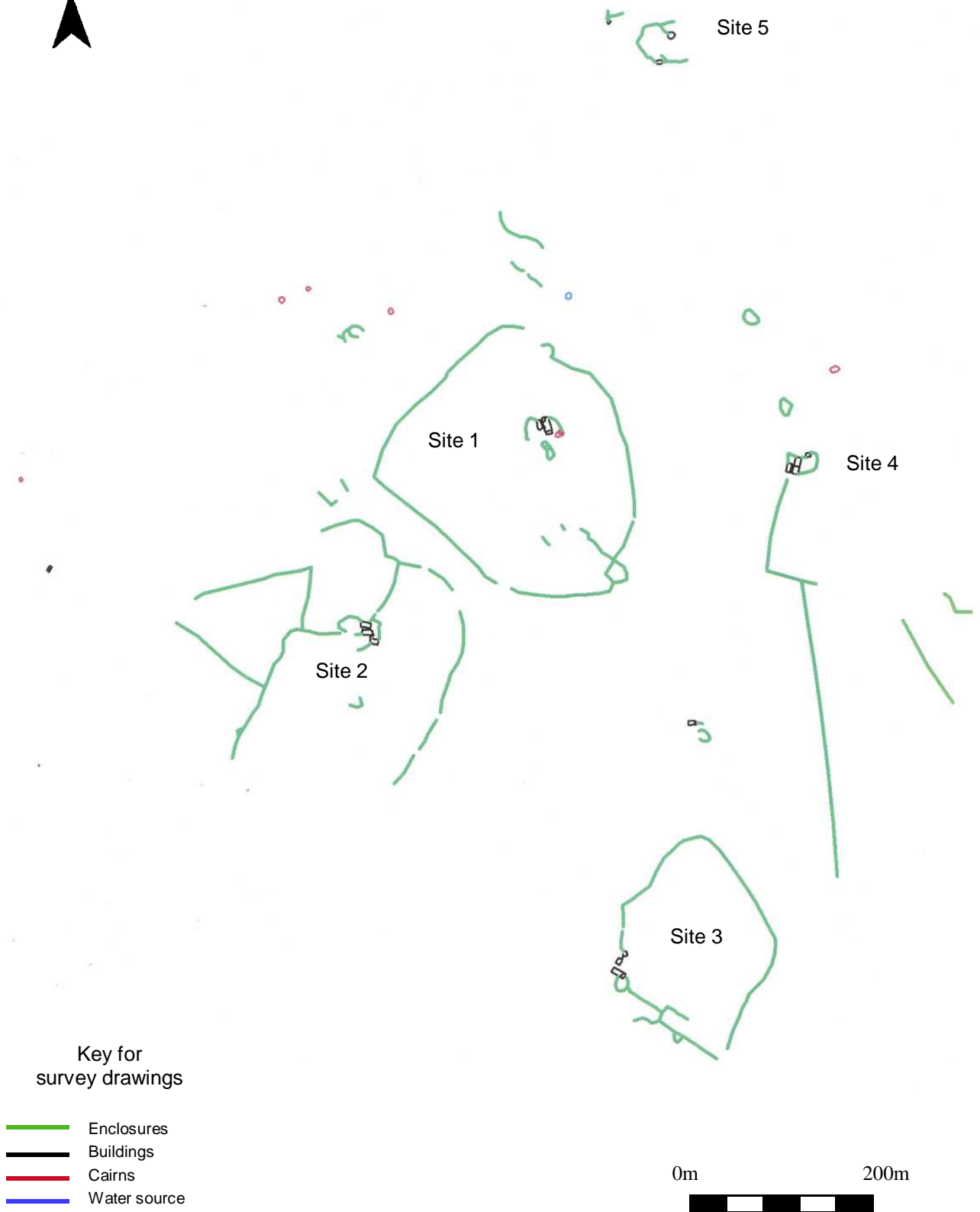


Fig 1: Complete Survey of Clapham Bottoms

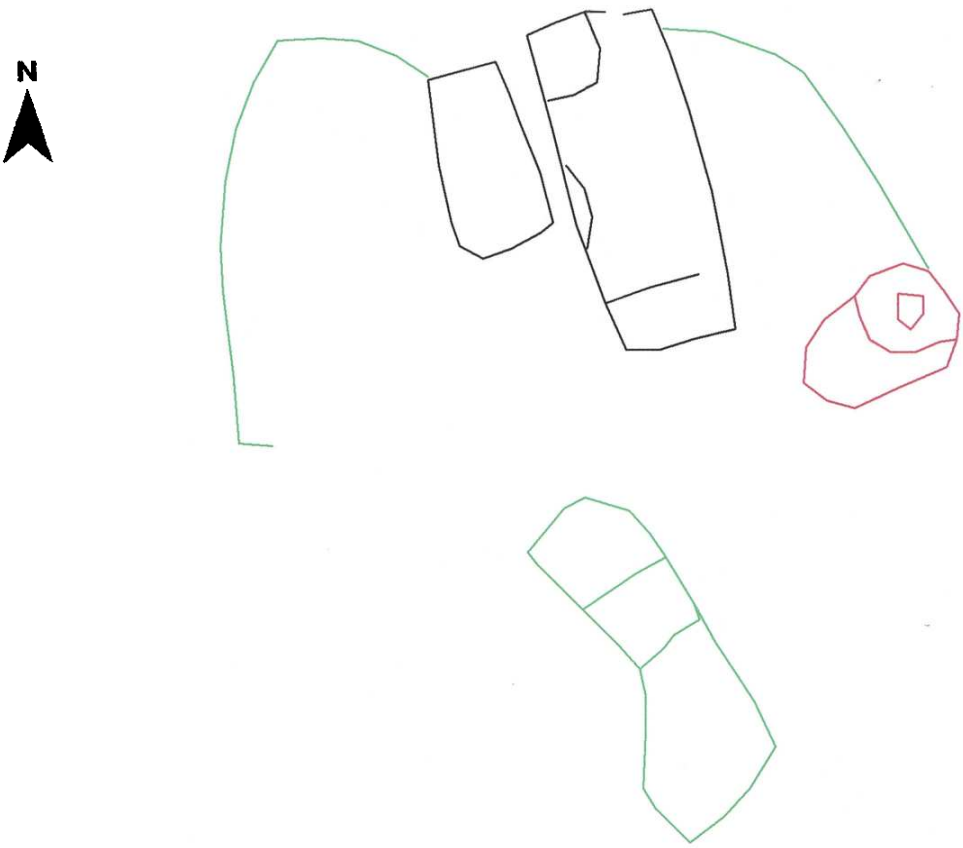


Fig 2: Site 1

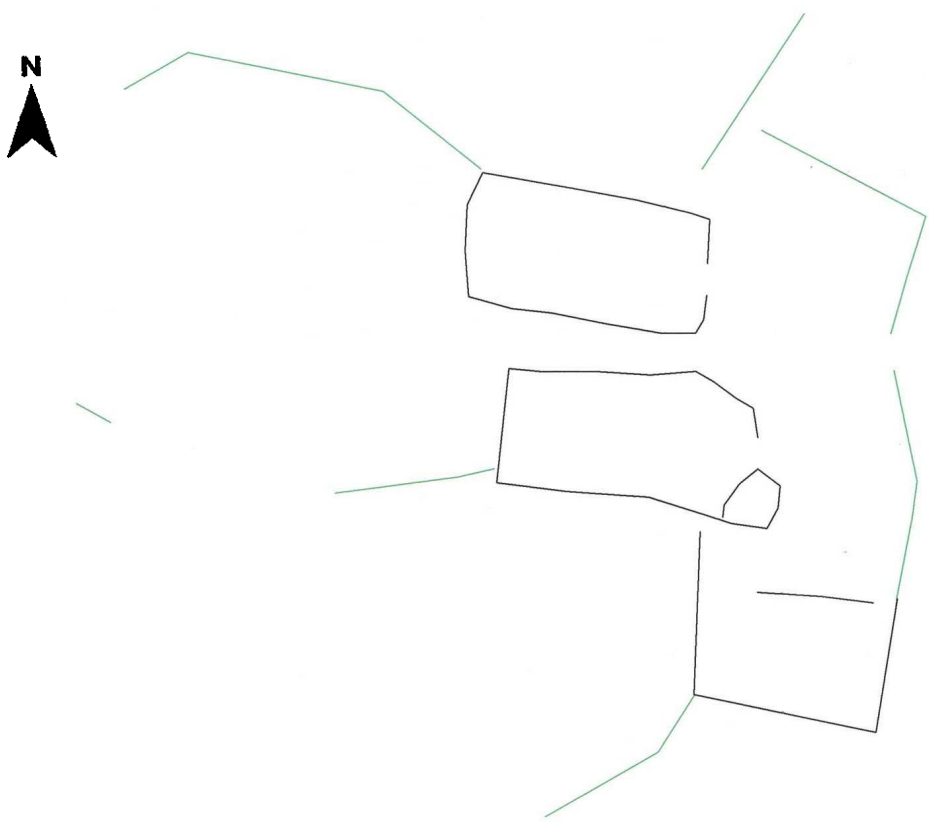


Fig 3: Site 2

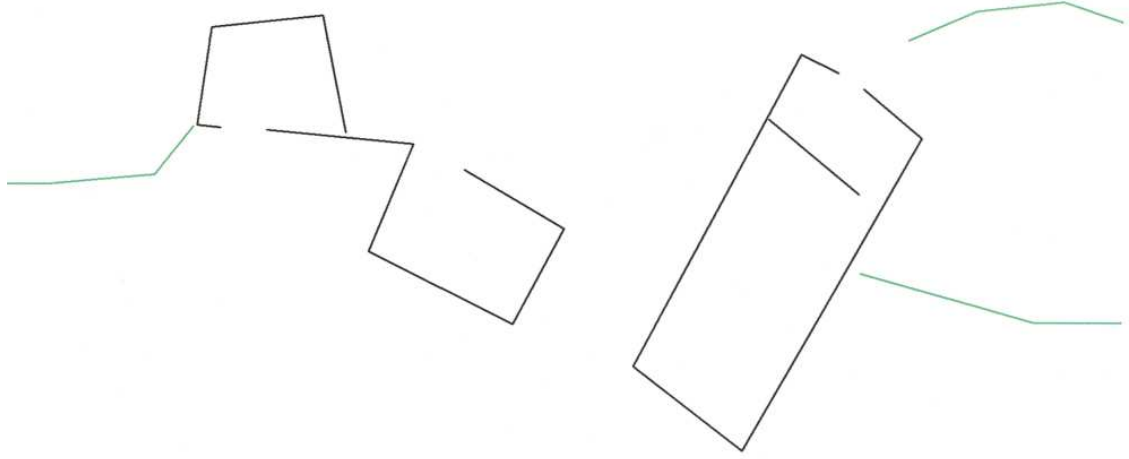


Fig 4: Site 3

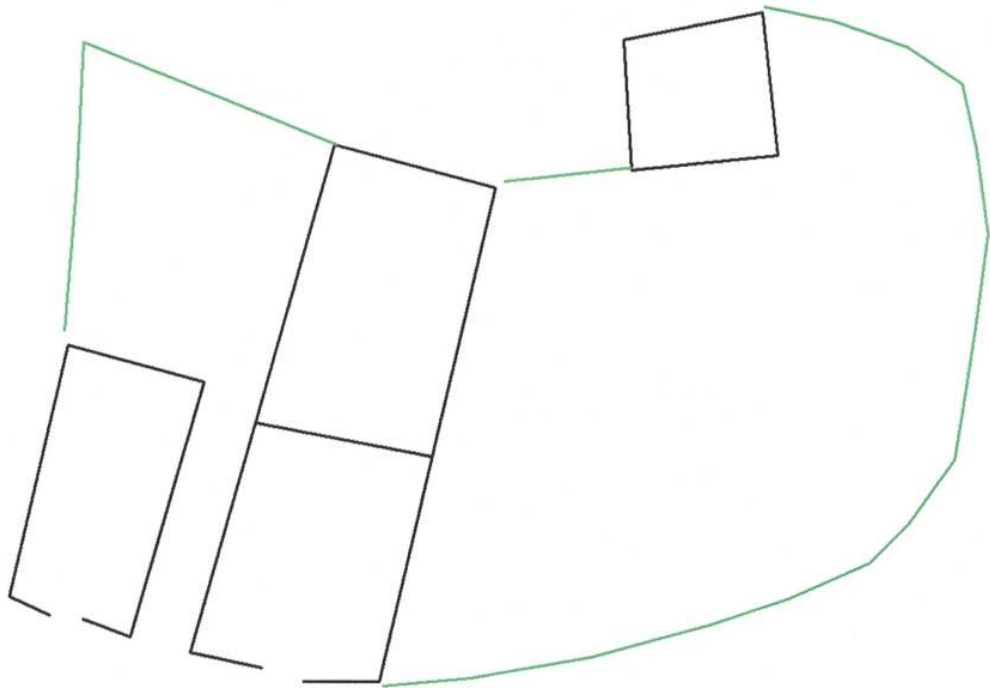


Fig 5: Site 4

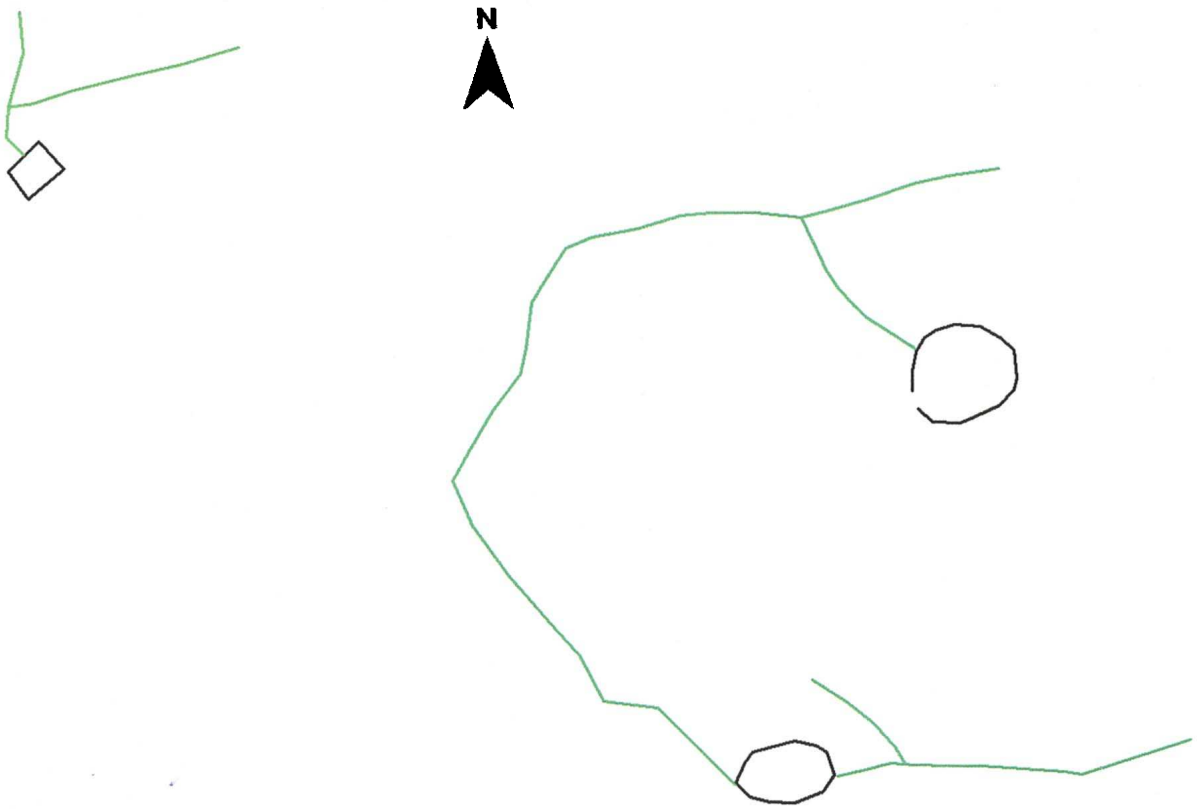


Fig 6: Site 5

## **Bibliography**

**Batty. A, (2010) *Archaeological Remains in Clapham Bottoms.***

### **Equipment:**

**Trimble 5800 GPS**

**Juniper Systems Archer PDA**

### **Software:**

**Microsurvey Field Genius**

**Map Window**

**Global Mapper 11**

**Adobe Photoshop**

For more Archaeological and Historical information go to our website.  
<http://ingleborougharchaeology.org.uk/>